

SRA SHOOTING TEST

Name: _____

Date of birth: _____

Division: Military Open Standard

In the shooting test there are 2 targets which are placed side by side with 110cm distance. Two shots to each target and scoring is **limited rounds**. At stages 1,2 and 4 12 shots are fired, at stage 3 6 rounds and at stage 5 8 shots are shot with pistol or 12 rounds with rifle. In total 50 or 54 shots is fired, maximum points 250 or 270.

Stage 1: 10 m. Starting position normal standing. Par time 5s/test. At test 1 and 2 the pistol is loaded in the holster and at test 3 the pistol is hold in the hand.

1. Test: 2 shots to both targets with both hands.
2. Test: 2 shots to both targets with strong hand.
3. Test: 2 shots to both targets with weak hand.

Stage 2: 10 m. Starting position normal standing 1. test, back towards the targets, 2. test left side towards the targets and 3. test right side towards the targets. par time 5 s/test.

1. Test: turn 180° and 2 shots to both targets.
2. Test: turn 90° and 2 shots to both targets.
3. Test: turn 90° and 2 shots to both targets.

Stage 3: 10 m. Starting position hands up and pistol loaded in the holster, par time 15s.

Shooter can decide to start from box A or B. Procedure: turn 180° and shoot 2 shots to the target front of the shooter from box A or B, move to the 2nd box and mandatory mag change. From 2nd box A/B 2 shots to the target front of the shooter and moving back to the starting box, while moving another mandatory mag change. From the starting box 2 shots to the target front of the shooter.

Stage 4: 20–15–10 m, par time 25s.. Starting position normal standing, pistol loaded in the holster. Procedure: 2 shots to both targets from box A (20 m) standing, moving to box B(15m), mandatory mag change and 2 shots to both targets kneeling. Moving to box C (10m), mandatory mag change and 2 shots to both targets on prone. (If it is not possible to shoot on prone at the range then also box C will be shot while kneeling).

Stage 5: Optional rifle or pistol stage. Par time is 15s. Rifle: 20 m, Normal standing. Shooter can decide to start from box A or B. From the starting box 2 shots to both targets, moving to box A/B and 2 shots to both targets, moving to box C and 2 shots to both targets. Pistol: 10–15 m, Normal standing at 10 m box, 2 shots to both targets, moving to 15m box and 2 shots for both targets.

Review:

Dangerous firearm handling will fail the test immediately. If the shooter gets 2 or more warnings on the same issue or the shooter is insecure or careless the test is failed.

1. Preparation: _____
2. Loading the gun and holstering: _____
3. Draw: _____
4. Changing positions: _____
5. Mag change: _____
6. Moving with the firearm: _____
7. Trigger finger: _____
8. Actions during potential malfunction: _____
9. Overall performance: _____

10. Emptying the gun, empty shot, holstering
- Test failed because of these reasons:

Stage 1	T1	T2	Hits	Points	Time
A/B					1
C					2
D					3
M					
Penalty					

Stage 2	T1	T2	Hits	Points	Time
A/B					1
C					2
D					3
M					
Penalty					

Stage 3	T1	T2	Hits	Points	Time
A/B					
C					
D					
M					
Penalty					

Stage 4	T1	T2	Hits	Points	Time
A/B					
C					
D					
M					
Penalty					

Stage 5	T1	T2	Hits	Points	Time
A/B					
C					
D					
M					
Penalty					

Points	
Total time	
Hit factor	

Test is passed if; hit factor is greater than 1,3 and the test is shot in safe manner.

Shooting test result:

Pass Fail

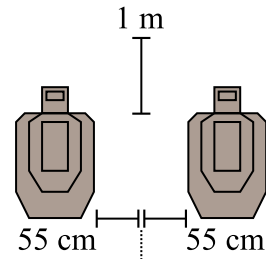
_____ Place _____ Date

Instructor's signature and name

SRA SHOOTING TEST



SRA Shooting test instructions



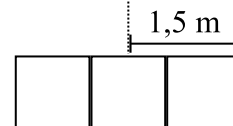
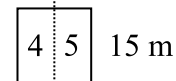
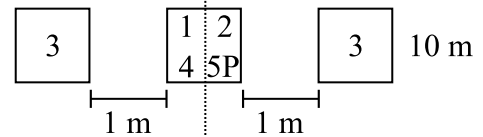
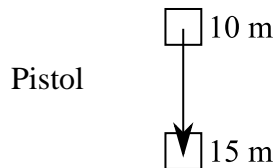
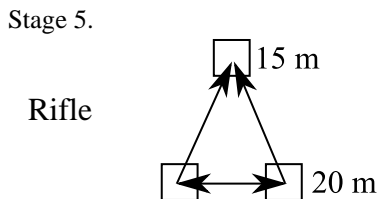
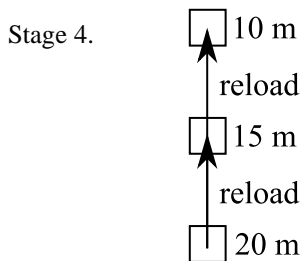
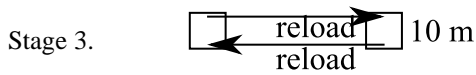
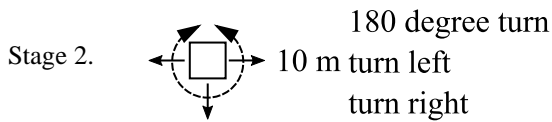
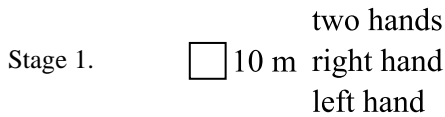
Targets to be used: SRA targets.

Height from the ground to the targets top is about 1.5 meters. Targets have to be placed on the same height and the targets need to be 110 cm apart, measured from the scoring line of the outer D area.

Shooting box size needs to be 1 x 1 m.

First measure the center line from the targets to 20 m and mark 20 m, 15 m and 10 m spots. Mark also the 1 x 1 m boxes to 20 m and 10 m.

On the stage 4 during prone shooting at the 10 m box the back fault line is not used.



Note: Handling sectors are 90° left, right and up, unless there is a need to make them narrower.